



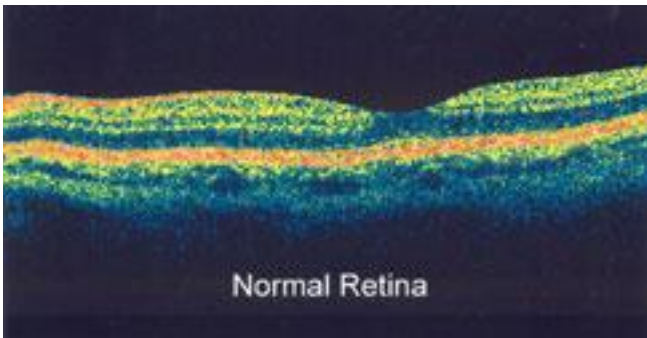
To Pay or not to Pay?

One question I am commonly asked by my customers relates to whether they would gain any benefit from paying for the latest 'extra' test that their opticians practice are recommending. It is natural to be very suspicious of 'extras' as we are all used to responding to 'special offers' and discovering that we are then offered a series of 'extras' that take the price far beyond that advertised. One 'extra' that I consider well worth paying for is the 3D Optical Coherence Tomography scan.

Optical coherence tomography (OCT) is a non-invasive imaging test that uses light waves to take cross-section pictures of your retina, the light-sensitive tissue lining the back of the eye.

With OCT, each of the retina's distinctive layers can be seen, allowing your optometrist to map and measure their thickness. These measurements help with early detection, diagnosis and treatment guidance for retinal diseases and conditions, including age-related macular degeneration and, diabetic eye disease, among others.

In addition, the OCT exam is helpful in determining changes to the fibres of the optic nerve, such as those caused by glaucoma. It is also instrumental in diagnosing many eye conditions, including:



- Macular hole;
- Macular pucker;
- Macular oedema;
- Age-related macular degeneration;
- Central serous retinopathy;

- Diabetic retinopathy
- Epiretinal membranes.

3D OCT is able to detect developing eye abnormalities which often start long before you notice your sight being affected. For those with existing eye conditions such as Age Related Macular Degeneration (AMD), diabetic eye disease or retinopathy and glaucoma, 3D OCT should be performed at regular intervals to determine if the condition is getting worse. For example, 10-15% of 'dry' macular degeneration cases develop into the more serious 'wet' form. In a

very short time major changes in the eye can lead to severe and permanent loss of vision. The cutting-edge 3D OCT comparison software can detect the slightest deterioration in a progressing eye condition often allowing prompt remedial treatment.

Regular screening 3D OCT eye scans are essential if we are to detect eye disease at an early stage and before vision is permanently damaged. Many eye conditions, including diabetic retinopathy, progress very slowly and symptoms do not appear until it is too late for any treatment to be effective.

If you have found this article interesting and have questions regarding it, then please do get in touch either for a chat by phone, or please feel free to email me.

Debra Watts F.B.D.O.

Ringlands Optics

Tel: 01264 333 092

Mobile: 07764 455 333

Email: ringlandsoptics@live.co.uk

Web: www.ringlandsoptics.co.uk